



WE LOVE IT WHEN CROCODILES WATCH US WORK

PROJECT:
The Laughing Frog
Lolly Shop & Amenities

CLIENT:
Australia Zoo Operations
Pty Ltd

LOCATION:
Australia Zoo, Beerwah

**IT'S NOT EVERY DAY YOU
GET TO WORK SURROUNDED
BY AUSTRALIA'S AMAZING
WILDLIFE. BUT FOR ONE
LUCKY BOX&CO CREW,
THAT'S EXACTLY WHAT
THEY'VE BEEN DOING FOR
THE LAST FEW MONTHS.**

Box&Co has recently completed construction of the new Laughing Frog Lolly Shop and amenities building at Australia Zoo.

While it was challenging carrying out construction in an operating zoo environment, it was an amazingly rewarding experience for our team, and one they won't soon forget.

We are very proud of the result and proud to be partnering with Australia Zoo and supporting Wildlife Warriors.

Turn to the back page to see more of this exciting project.

MANAGING
DIRECTOR'S
REPORT



75 YEARS AND STILL GOING STRONG

AS WE COME TO THE END OF 2018, WE ARE SO PROUD TO BE CELEBRATING 75 YEARS OF BOX BUILDING SUCCESS.

Our annual 'Beers on Box' event was a great chance for us to thank everyone who has been part of our journey.

We also are very proud to be working with Australia Zoo and becoming Wildlife Warriors. Attending the Steve Irwin Gala Dinner in our khakis was inspiring and a highlight for us this year.

In terms of our business, we have had a slower start to FY 19 than anticipated, with activity levels very similar to that of post GFC. It's difficult to ascertain a single cause for this, however, it would most certainly be related to a drop in business confidence due to the Banking Royal Commission and lack of leadership in our Federal Government. In Brisbane's case there has also been a 50% drop in residential approvals (mainly high density) which has

ultimately concentrated Contractors back into the commercial sector. Given Q1 of any FY is traditionally a busy time for Box & Co, I would anticipate at 15-20% reduction in our revenue projections for FY19.

The slower start to FY 19 has given us the chance to take the time to appreciate where we have come from and plan ahead.

Simon Box
MANAGING DIRECTOR
BOX&CO

INSIDE THE
BOX



'BEERS ON BOX' CELEBRATES SPECIAL MILESTONE

Beers on Box was a special one this year – celebrating 75 years of Box building tradition! Old faces and new faces attended the afternoon at the Lord Stanley to help the Box&Co Team celebrate. Plenty of memorabilia was on display to take us back to 1943!

STEVE IRWIN GALA DINNER

As Wildlife Warrior sponsors, Box & Co were proud to attend the Steve Irwin Gala Dinner in November at the Brisbane Convention Centre. It was a great night with the boys getting to rub shoulders with the 'who's who' of Australian wildlife.



Member milestones

Box & Co celebrate 65 years

The Box Family building tradition had humble beginnings in 1943, when Joseph Stanley Box (Joe) formed J.S. Box & Co Pty Ltd. The company started by building some of Brisbane's first war homes but moved into the commercial market in 1956 with the completion of Scotts College Assembly Hall in Warwick.

Joe Box became one of the leading figures in Queensland construction over the next 35 years with the completion of many quality projects and his efforts with developing a changing industry.

Geoff Box (Joe's eldest son) joined J.S. Box & Co Pty Ltd in the early 60's following completion of Quantity Surveying at QIT. Geoff began managing the company in the late 60's and continued the tradition of building excellence in Queensland. In 1978, Joe Box retired and it was at this time that G&J Box Pty Ltd was formed.

Geoff continued to grow the business during the

70's, 80's and 90's and during this time received a number of excellence awards.

Geoff also had significant involvement in development of the Queensland construction industry with time as Vice President of Master Builders and President of the Australian Institute of Building in the early 90's. G&J Box Pty Ltd continued to grow during the mid to late 90's and it was during this time that Geoff's sons (Jeremy & Simon Box) were completing studies at QUT to eventually take over the business as the third generation.

Unfortunately in 2001, some unforeseen personal circumstances saw the closure of G&J Box Pty Ltd and regrettably both Jeremy and Simon Box were not in a position to take over the family business. This position changed over the ensuing years and in 2006, Jeremy and Simon Box incorporated Box & Co Pty Ltd and began re-building the family business. Box & Co



had a very strong period of growth during 2007 employing key staff in Site Management and Project Management positions and successfully completing various commercial projects up to \$2 million.

Box & Co continues to grow in 2008, with acquisition of additional key staff and also through securing key projects such as UNE Greenhouses (\$15.5 million) and Design and Construction of an Office and Production Facility at Eight Mile Plains valued at \$8.5 million.

Box & Co is proud to be celebrating 65 years of building Queensland and looks forward to further contributing to the industry over coming years.

This Master Builder magazine feature from a decade ago is an interesting read about Box&Co's early beginnings and growth over the years.



Leica tools are Siteproof. Build keep on delivering with world

Leica Rugby 50/55
They are tough and simple to use. Rugby 50 with single button operation. It self-levels over the course of the day. Rugby 55 with both horizontal and vertical alignment and selectable scanning modes. High impact watertight and dust proof housing.

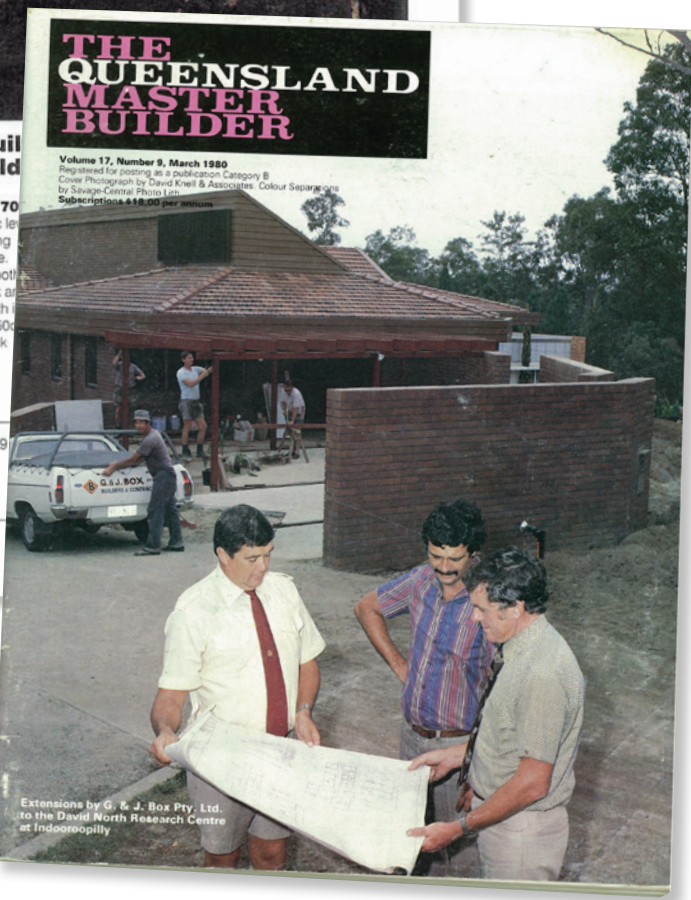


Leica Rugby 100 Rely on the versatile Rugby100. Automatic self-levelling horizontal laser with two speed head rotation and manual grade option. Accuracy of +/-1.5mm per 30m. Self levelling range of +/-3 degrees. Uses alkaline or rechargeable battery pack.



Leica NA 70 in automatic level price, nothing comes close. Perfect for both distant work as close-up with ultra-close 500 focus. Shock resistant, weather proof.

- Brisbane 3390 3345 • Bundaberg 4153 6036 • Cairns 4031 6610 • Gold Coast 5569 2099
- Goondiwindi 4671 4033 • Kingaroy 4162 8432 • Mackay 4954 6173
- Rockhampton 4922 8399 • Townsville 4771 6121 • Wacol 3879 3991

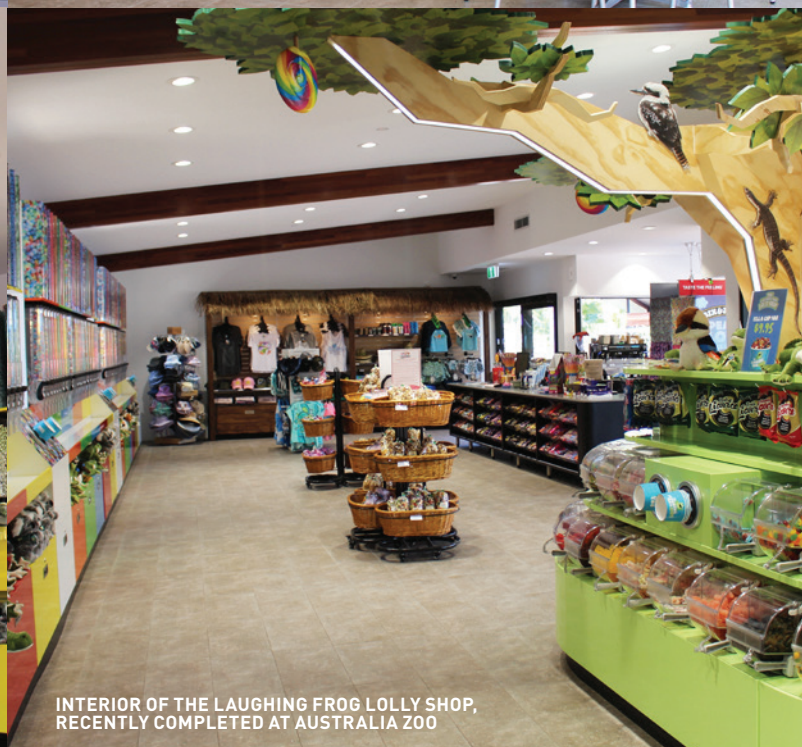


AS WE CELEBRATE OUR 75 YEAR MILESTONE, IT SEEMS FITTING TO LOOK BACK AT WHERE WE HAVE COME FROM. CHECK OUT THESE BLASTS FROM THE PAST.

We dusted off this copy of Queensland Master Builder magazine from the archives and look who's on the cover...

RECENT PROJECTS

VIEW FROM THE LOLLY SHOP THROUGH TO THE NEW AMENITIES AT AUSTRALIA ZOO



INTERIOR OF THE LAUGHING FROG LOLLY SHOP, RECENTLY COMPLETED AT AUSTRALIA ZOO

ABOUT BOX&CO

ESTABLISHED IN 1943, BOX&CO HAS BUILT A REPUTATION FOR RELIABILITY, QUALITY AND LONG LASTING RELATIONSHIPS.

A family company, Box&Co specialises in construction and building services & maintenance.

We look after public and private clients in a range of sectors including commercial, retail, public utilities, education, health and specialist technical.

We believe all relationships are built with trust and a genuine personal interest.

Every one of our team members is committed to a single vision – to share in the proud Box&Co tradition of service and excellence.

**Box
&CO**
BUILDERS EST 1943

Founded on trust.

Call us on 3217 4655

E reception@boxandco.com.au

PO Box 1477 Coorparoo DC QLD 4151