

# BUILDING BRISBANE'S CHRISTMAS SPIRIT

**PROJECT:**  
Brisbane City  
Christmas Tree

**CLIENT:**  
Brisbane City Council

**LOCATION:**  
King George Square

BOX&CO'S ENERGETIC TEAM OF ELVES HAS BEEN BUSY AGAIN, MAGICALLY INSTALLING BRISBANE'S SPARKLING CHRISTMAS TREE IN KING GEORGE SQUARE.

The tree, covered with thousands of twinkling coloured lights, was installed in late November, just in time for The Lord Mayor's Lighting of the Christmas Tree on November 25.

And we're excited to say that our Christmas wish has come true with Box&Co being awarded the honour of returning to King George Square to do it all again in 2023 and 2024.

---

Turn to the back page for more pics of the team getting into the Christmas spirit in the CBD, or visit [boxandco.com.au/projects](https://boxandco.com.au/projects) to see more of what we've been up to in 2022.



MANAGING  
DIRECTOR'S  
REPORT



# A BRIGHTER 2023 IS ON OUR WISH LIST

THE CONSTRUCTION INDUSTRY CONTINUES TO STRUGGLE UNDER THE CURRENT ECONOMIC CONDITIONS INCLUDING LACK OF RESOURCES AND MATERIAL AVAILABILITY, HIGH INFLATION AND A DROP IN BUSINESS CONFIDENCE.

It's not possible to determine how long this may persist but all indications are that it may be at least 24 months.

Box & Co has adopted a conservative approach to the current conditions ensuring we are focused on our core strengths and this has ensured our ongoing success.

As 2022 comes to an end, we'd like to take this opportunity to thank our clients and suppliers for their continued support in challenging times.

We look forward to working with you again in 2023 and making the year ahead as 'prosperous' as possible for us all.

**Simon Box**

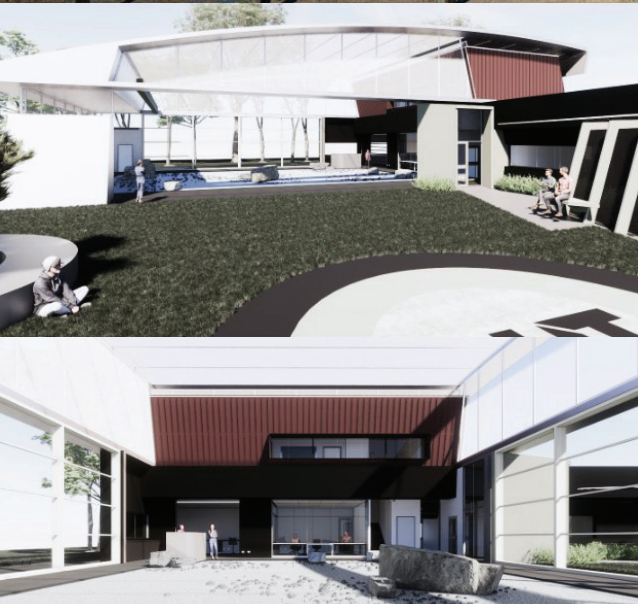
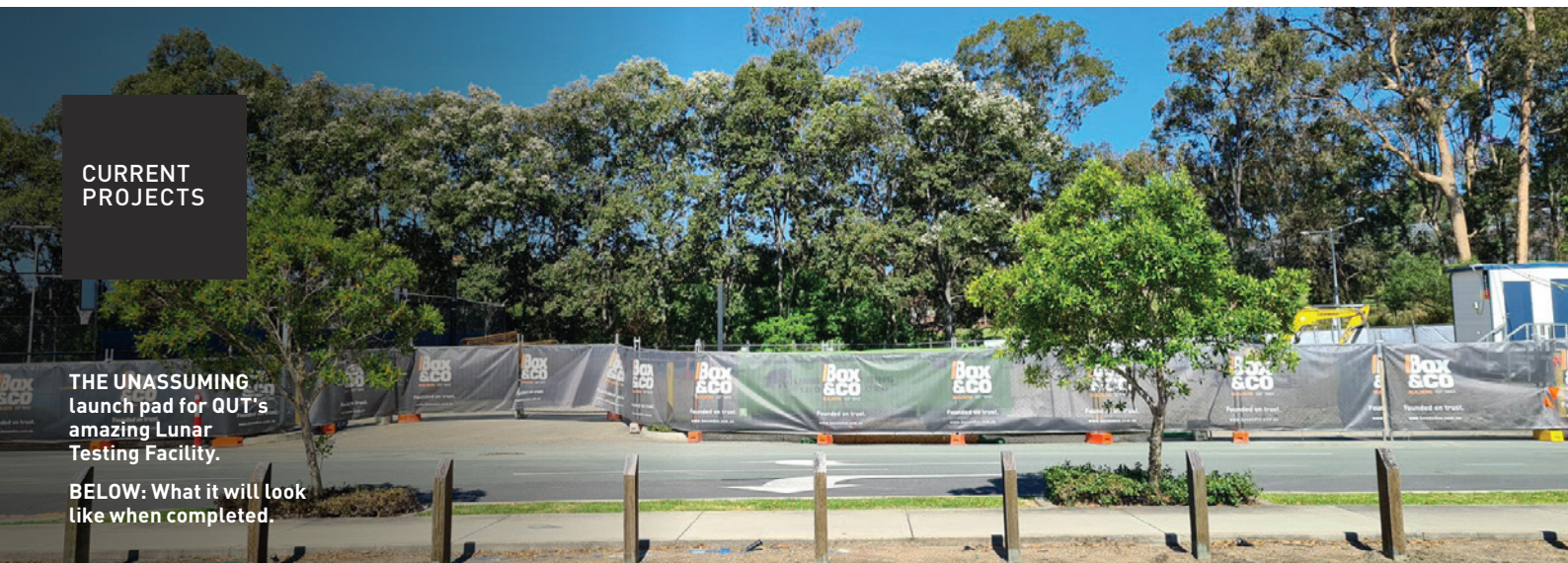
MANAGING DIRECTOR  
BOX&CO



CURRENT  
PROJECTS

THE UNASSUMING  
launch pad for QUT's  
amazing Lunar  
Testing Facility.

BELOW: What it will look  
like when completed.



## MISSION TO THE MOON

WITH A BIT OF IMAGINATION – OK,  
A LOT OF IMAGINATION – YOU CAN  
VISUALISE THE AMAZING LUNAR  
TESTING FACILITY THAT BOX&CO  
WILL BE BUILDING AT QUT'S  
KELVIN GROVE CAMPUS.

The facility will house a purpose-built pit, filled with simulated lunar surface material, on which robots are to be tested.

Associated research offices and workshops will make up the balance of the building.

The works will take approximately eight months to complete and will be finished in late 2023.



## FLAGSTONE STAGE 2

THE SECOND stage of Flagstone Shopping Centre is well underway, with the Box&Co crew having already lifted 53 tonnes of steel into place.

CURRENT  
PROJECTS



## PROJECT 'WHITEBOX'

BOX&CO IS ON TARGET TO COMPLETE THE DESIGN AND CONSTRUCTION OF A NEW BRISBANE FOOD PROCESSING AND PACKING FACILITY BY THE 1ST MARCH 2023.

The project involves the installation of an internal cladding system constructed out of PIR panel. PIR stands for 'POLYISOCYANURATE' which is a thermoset plastic, closed cell, rigid insulation with great thermal efficiency. The panel is supported by high tensile strength cables and can support up to 120kg per metre.





COMPLETED  
PROJECTS

The Box&Co team were on hand in the CBD to celebrate Christmas a little early this year.



## ABOUT BOX&CO

**ESTABLISHED IN 1943, BOX&CO HAS BUILT A REPUTATION FOR RELIABILITY, QUALITY AND LONG LASTING RELATIONSHIPS.**

A family company, Box&Co specialises in construction and building services & maintenance.

We look after public and private clients in a range of sectors including commercial, retail, public utilities, education, health and specialist technical.

We believe all relationships are built with trust and a genuine personal interest.

Every one of our team members is committed to a single vision – to share in the proud Box&Co tradition of service and excellence.

**Box  
&CO**  
BUILDERS EST 1943

Founded on trust.

Call us on 3217 4655

E [reception@boxandco.com.au](mailto:reception@boxandco.com.au)

PO Box 1477 Coorparoo DC QLD 4151

FOLLOW US ON:

